



DBManager

User Manual

Version 1.25



INDEX

1	INTRODUCTION	3
2	INSTALLATION	3
3	SOFTWARE ACTIVATION	6
	<i>Automatic Registration</i>	<i>7</i>
	<i>Activation by E-mail</i>	<i>8</i>
	<i>Activation by phone call</i>	<i>9</i>
4	SCALE CONFIGURATION.....	10
	<i>Automatic search</i>	<i>11</i>
	<i>Manual search.....</i>	<i>12</i>
5	ARCHIVES COMPILATION.....	15
	WARRANTY AND USER LICENSE	17
	<i>Declaration of responsibility.....</i>	<i>17</i>

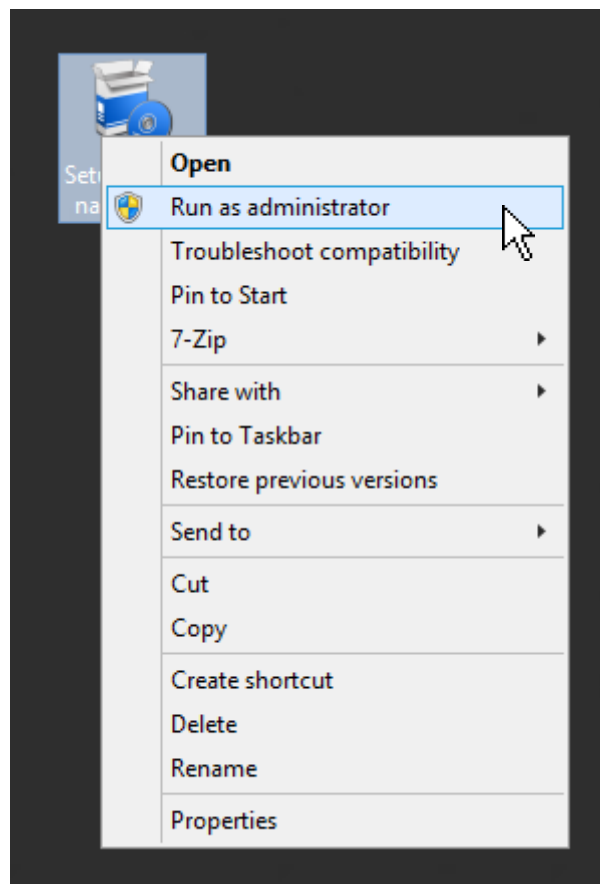
1 INTRODUCTION

DBManager.NET allows to manage and view databases on 3590 instruments by PC with an user friendly interface.

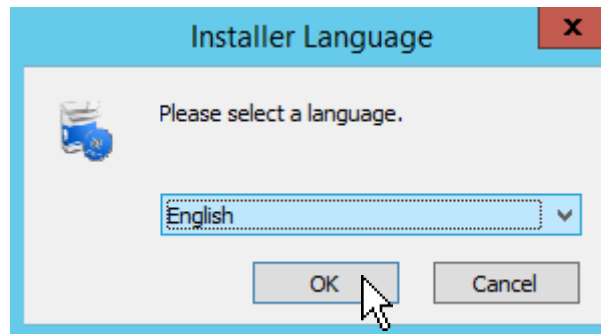
It also possible to select the desired language.

2 INSTALLATION

To install the program follow this procedure:



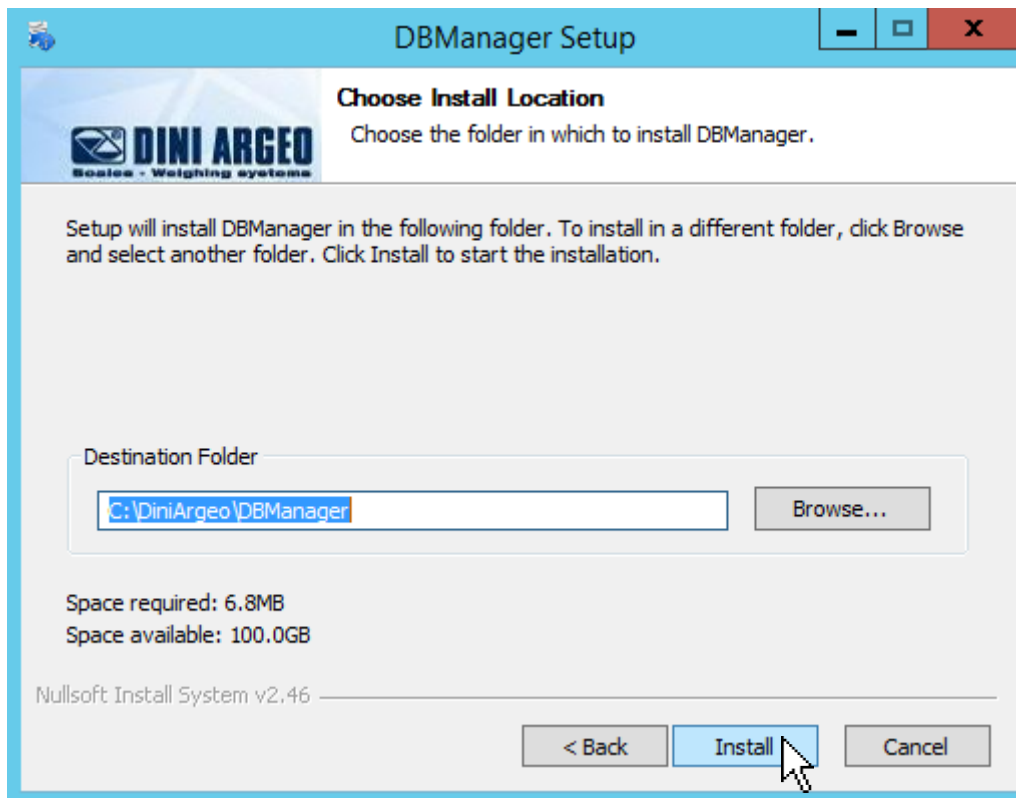
Run Setup as administrator



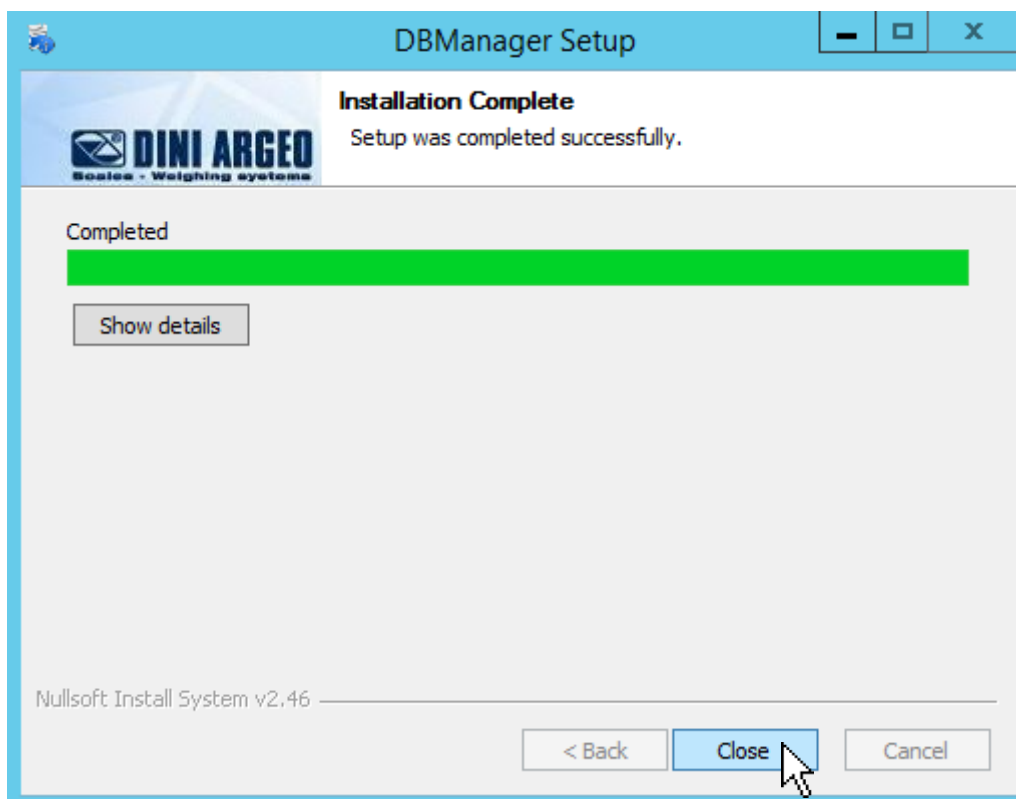
Select your language and click "OK"



Read Warranty and user licence and click "I Agree"



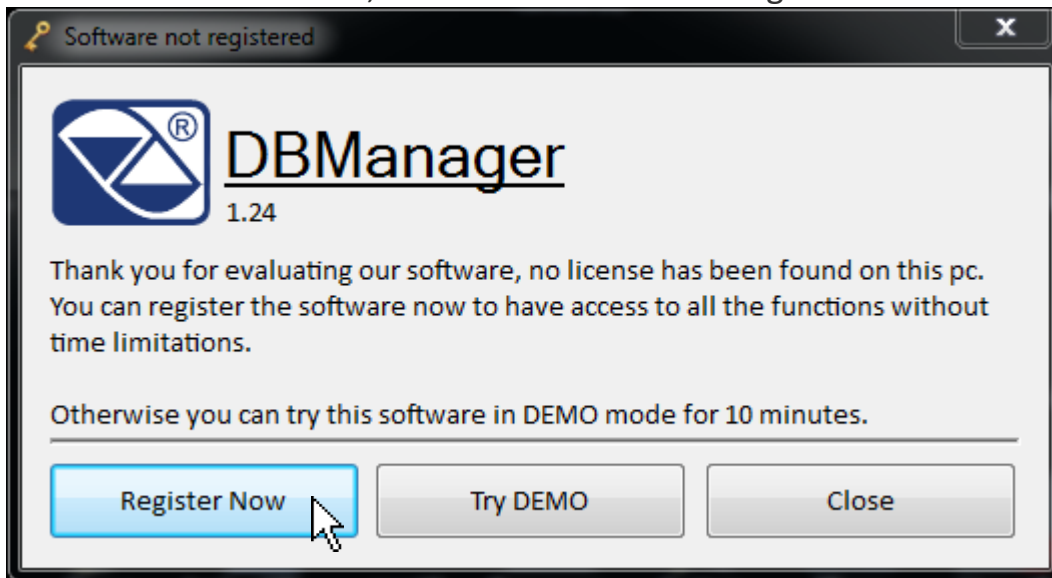
Choose the installation path and click "Install"



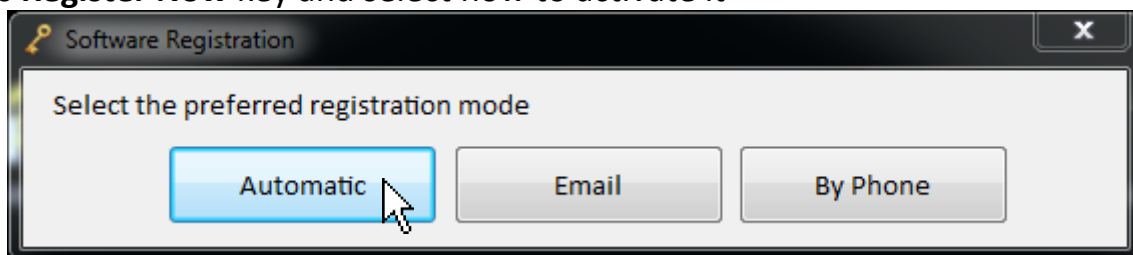
When the installation is completed click "Close"

3 SOFTWARE ACTIVATION

When software is not activated, it starts with the following screen:



After 10 seconds, you can use it in DEMO mode or you can Register it. Press **Register Now** key and select how to activate it

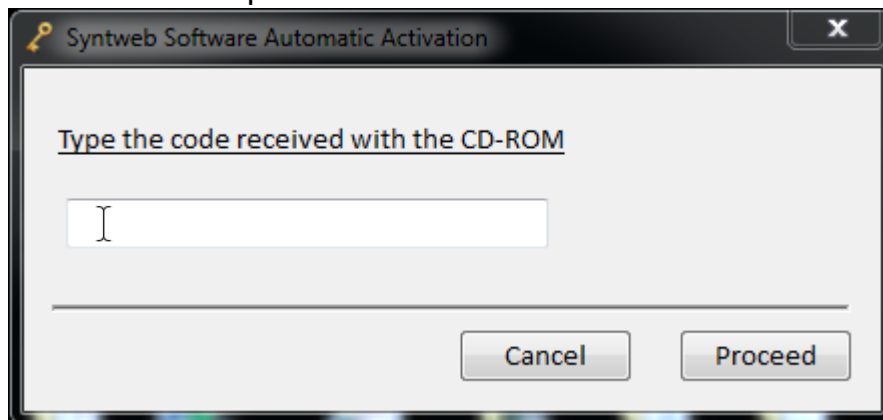


1. **Automatic mode:** it is the easiest method but it requires the use of the internet during the activation. If internet communication is disabled, you must enable it only for a few minutes in order to activate the software and then you can turn it off.
2. **Mode by E-mail:** it is a manual method. By sending an email to the software manufacturer it is possible to request a new code replacing the old one provided.
3. **Mode by Phone:** it is a manual method. By calling the software manufacturer it is possible to request a new code replacing the old one provided.

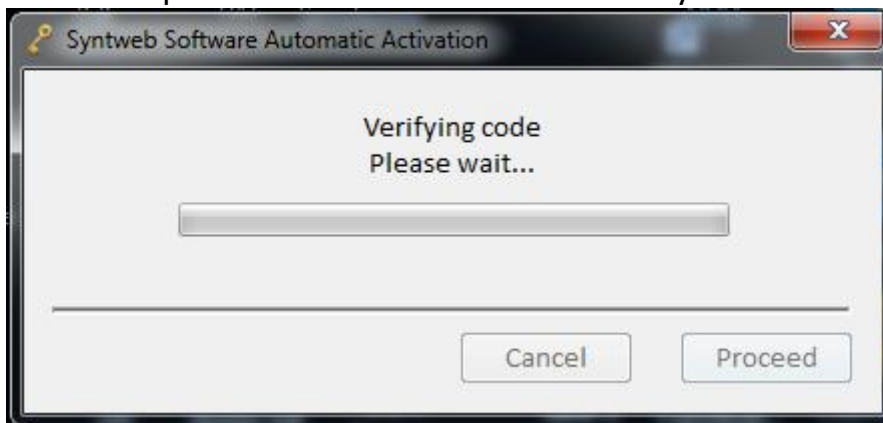
Automatic Registration

Connect the PC to Internet

1. Press **Automatic** key
2. Enter the activation code provided



3. Now, the activation procedure continues automatically



4. Once the registration terminates successfully, close this screen to end the procedure.
Now the program is ready to work.



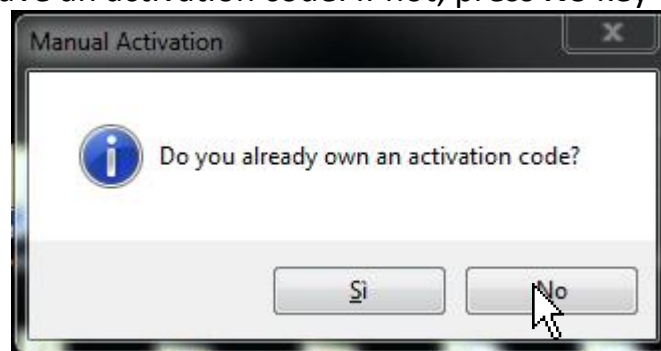
If you have not an internet connection, you can choose one of the other two activation modes after the code withdrawal by the software provider

Activation by E-mail

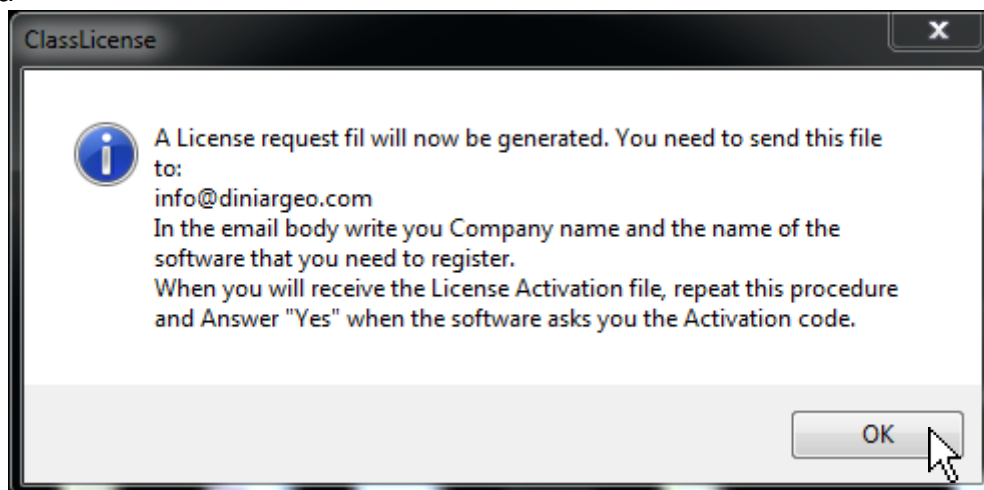
Click on **E-mail** key and you need to:

1. Generate the license requested file "LicenseRequest"
2. Send it via e-mail
3. Wait for the complete file license
4. Import the complete file license received

The PC asks if you have an activation code. If not, press **No** key

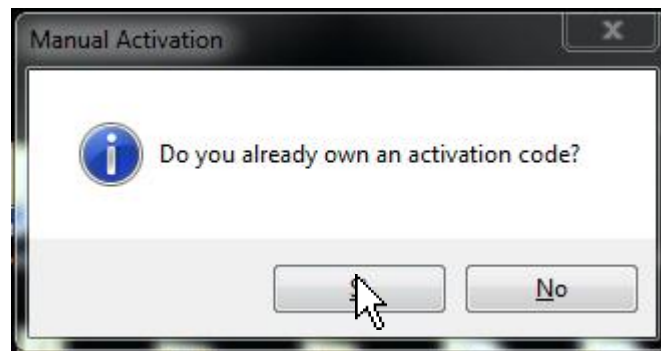


The PC creates the file "*Licence Request*" to be saved and forwarded to the manufacturer by e-mail indicating the name of the company and the software to be registered

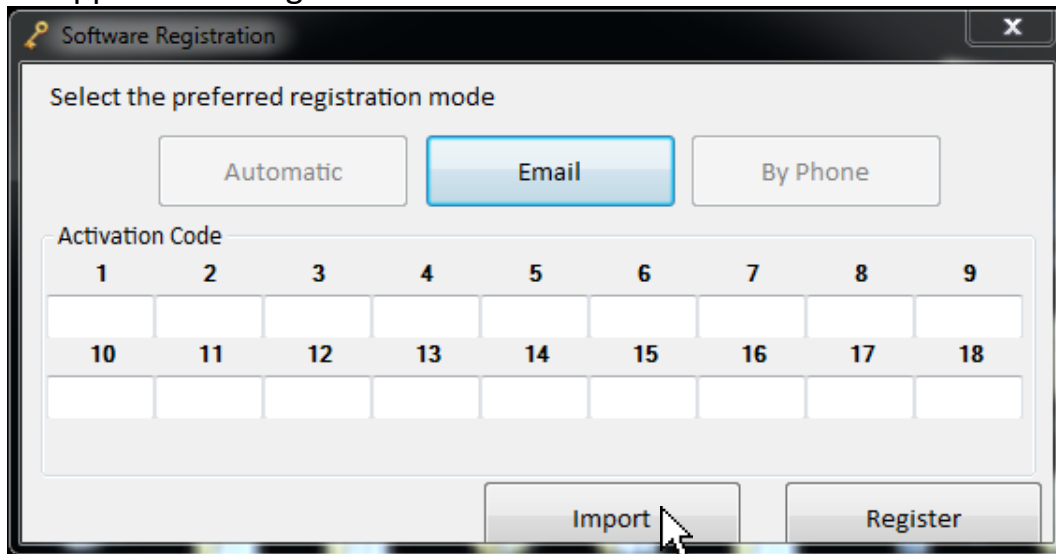


Soon, the producer you will send by email a file **DiniargeoLicence.Lic** indicating the activation code.

Repeat the procedure and when the PC asks if you have an activation code, press **Yes** key

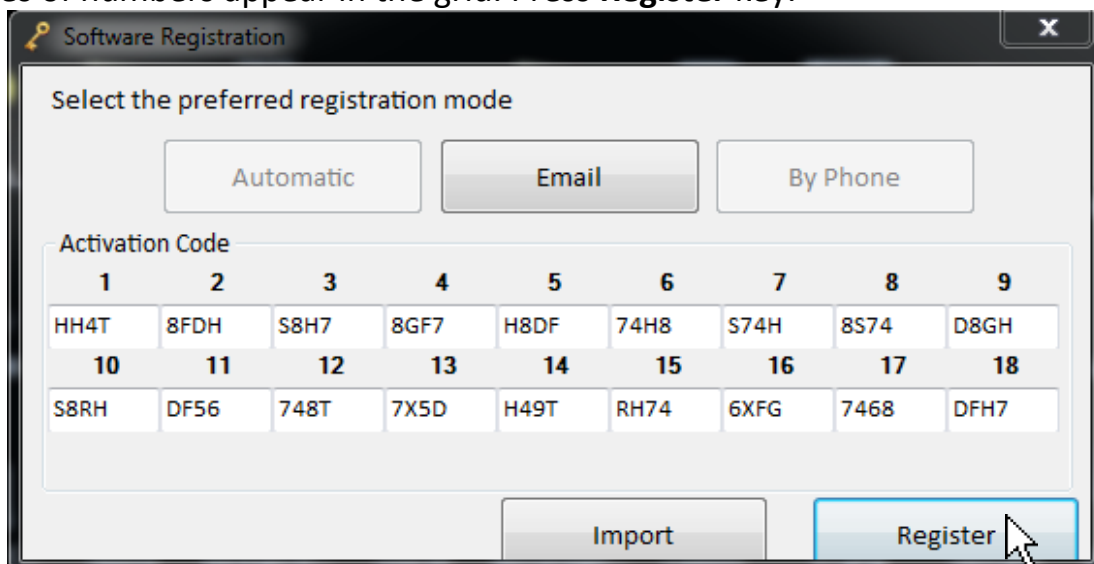


A window appears with a grid of 18 numbers to fill.



Press **Import** key and import the code that came from the manufacturer and which has been saved on your PC.

A series of numbers appear in the grid. Press **Register** key.



Activation is completed but the PC requests to restart the software.

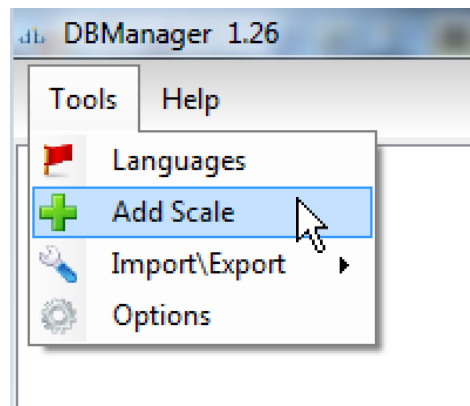
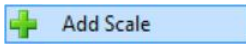
Activation by phone call


If you wish to choose the phone mode, press **By phone** and call the software provider.

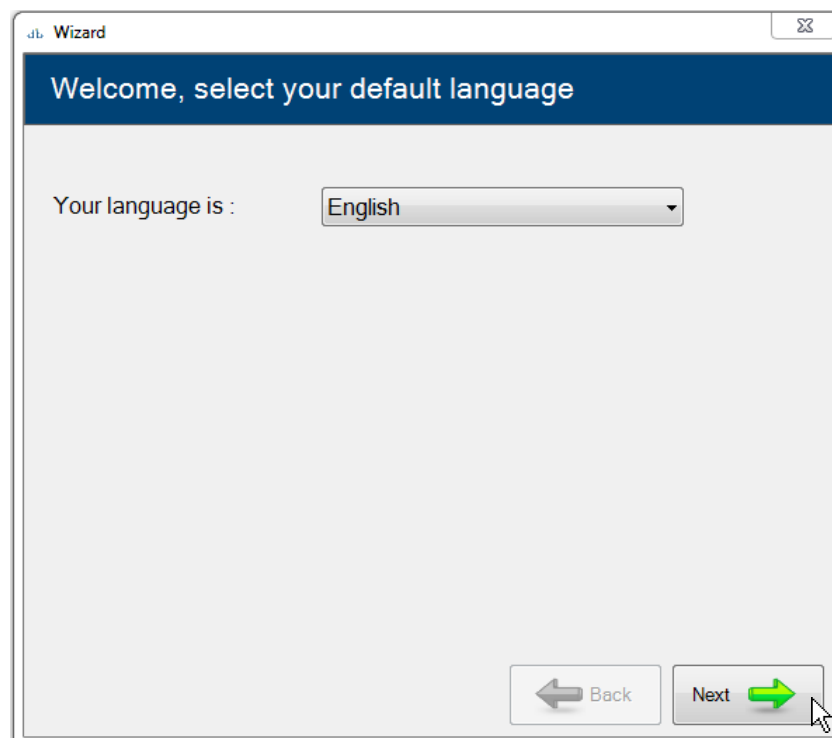


4 Scale configuration

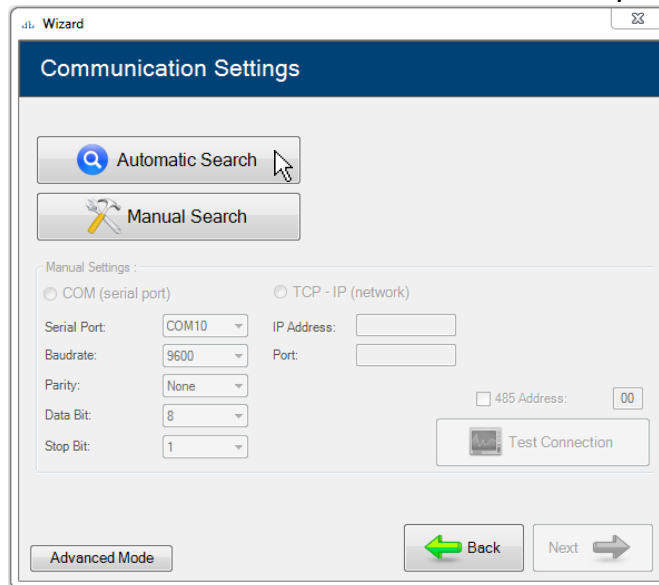
To create a new scale database, go to Tools on the top left corner and click

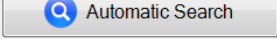


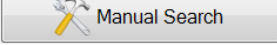
Select your language and click 



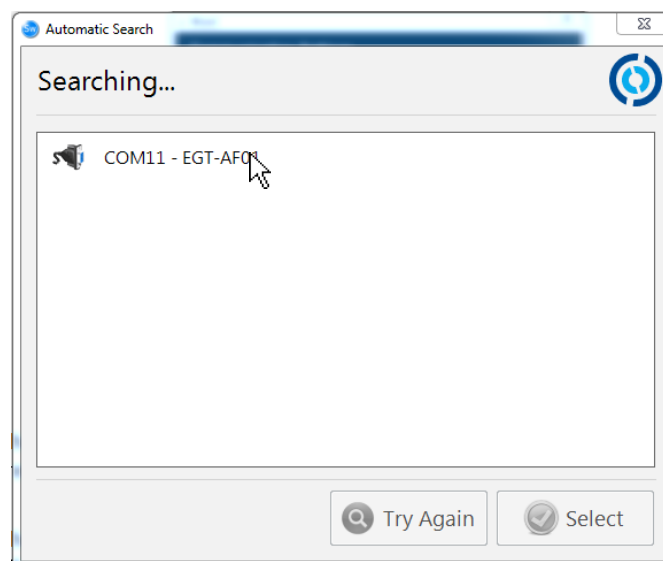
A window appears and it allows to set the connection parameters



If you choose  the program automatically searches the serial ports to find connected scales(recommended). If you have a network scale go to the next step.

If you choose  you need to insert the serial port or TCP-IP parameters manually

Automatic search



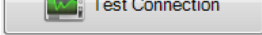
Select your scale and click



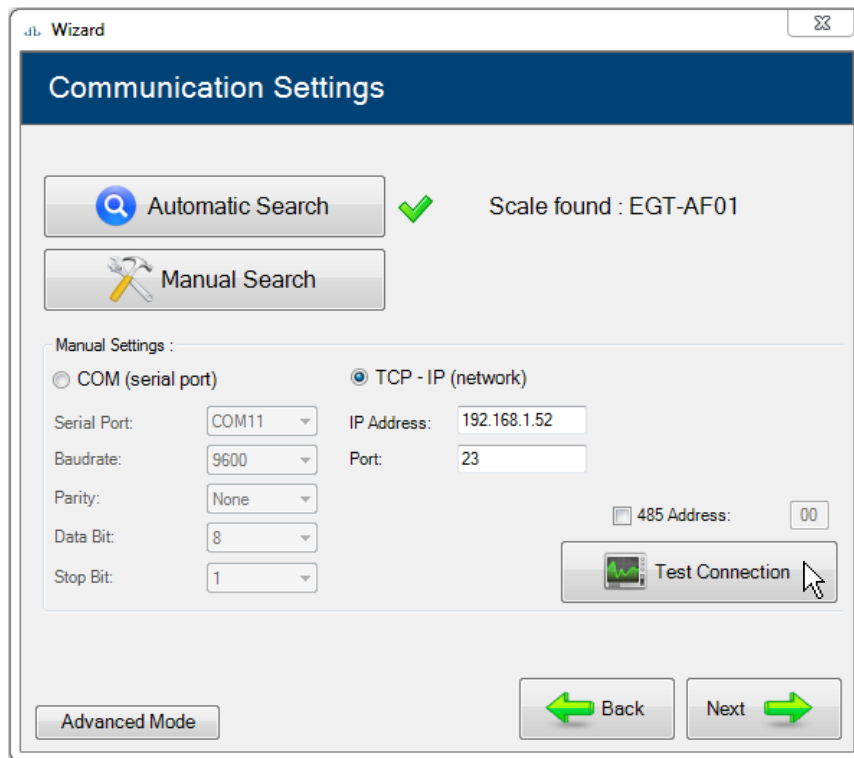


Manual search

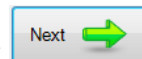
Choose it if you connect the scale via COM (serial port) or TCP – IP (network)

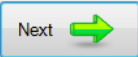
Insert the communication parameters and click  to test the connection.

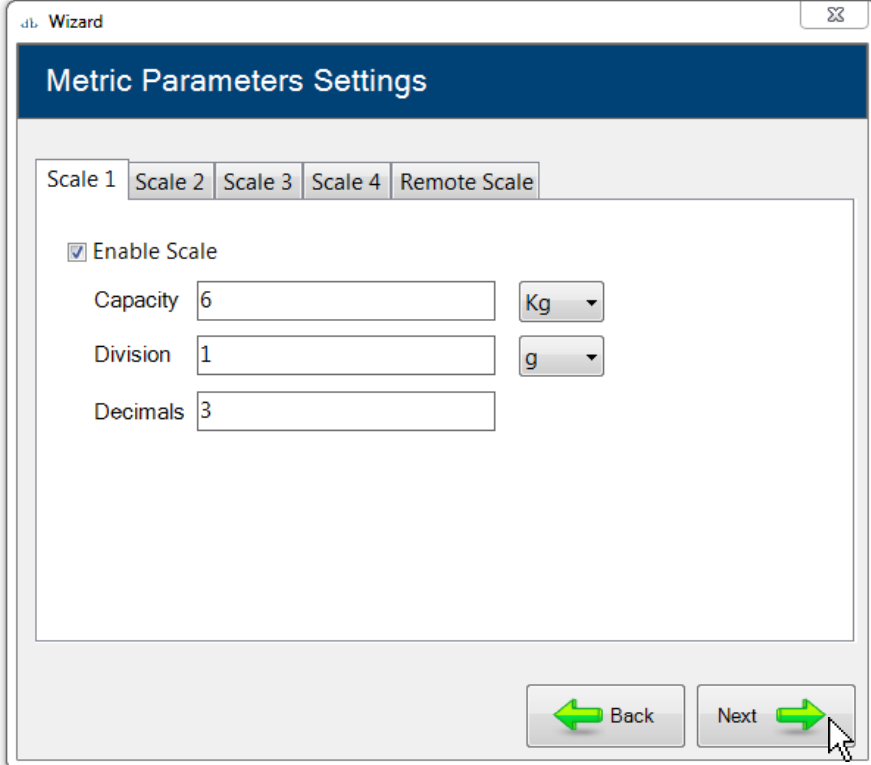
If a scale is found a message appears. If not, check if the parameters are correct or if the scale is properly connected to PC.



When you have done click

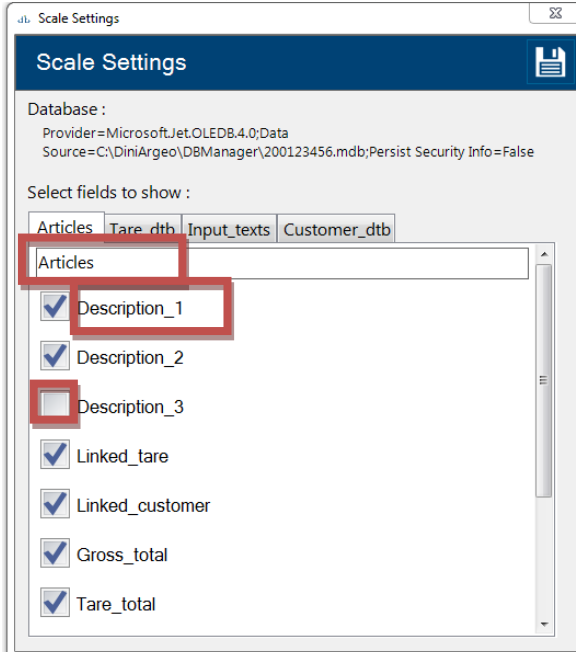


Fill the blanks related to metrological scale parameters like number of connected scale, capacity, division, decimals and click 



The image shows a 'Metric Parameters Settings' dialog box with a title bar 'Wizard'. It has tabs for 'Scale 1', 'Scale 2', 'Scale 3', 'Scale 4', and 'Remote Scale'. The 'Scale 1' tab is active. There is a checked checkbox for 'Enable Scale'. Below it are three input fields: 'Capacity' with the value '6' and a unit dropdown set to 'Kg'; 'Division' with the value '1' and a unit dropdown set to 'g'; and 'Decimals' with the value '3'. At the bottom, there are 'Back' and 'Next' buttons with green arrows.

DBManager starts to read the structure of the archives. It is possible to change the labels of the archives by clicking on the corresponding label and by enabling/disabling fields.



The image shows a 'Scale Settings' dialog box with a title bar 'Scale Settings'. It displays database information: 'Database : Provider=MicrosoftJet.OLEDB.4.0;Data Source=C:\DiniArgeo\DBManager\200123456.mdb;Persist Security Info=False'. Below this is a section 'Select fields to show :'. There are four tabs: 'Articles', 'Tare_dtb', 'Input_texts', and 'Customer_dtb'. The 'Articles' tab is active. A list of fields is shown with checkboxes: 'Articles' (checkbox checked), 'Description_1' (checkbox checked), 'Description_2' (checkbox checked), 'Description_3' (checkbox unchecked), 'Linked_tare' (checkbox checked), 'Linked_customer' (checkbox checked), 'Gross_total' (checkbox checked), and 'Tare_total' (checkbox checked). Red boxes highlight the 'Articles' field name and the 'Description_1' checkbox.



Select fields to show :

Articles data Tare_dtb In

Articles data

Description_1

Articles data Tare_dtb Input_texts

Articles data


Description

Description_2

Description_2

Description_3

Linked_tare











To proceed click 

The software starts to read all archives, wait until it ends


5 Archives compilation









ID	Description 1	Description 2	Description 3	Linked tare	Linked customer	Gross total	Tare total	Weighs_to	Setpoint 1	Setpoint 2	Setpoint 3
1				0	0	0,000	0,000	0,000	0,000	0,000	0,000
2				0	0	0,000	0,000	0,000	0,000	0,000	0,000
3				0	0	0,000	0,000	0,000	0,000	0,000	0,000
4				0	0	0,000	0,000	0,000	0,000	0,000	0,000
5				0	0	0,000	0,000	0,000	0,000	0,000	0,000
6				0	0	0,000	0,000	0,000	0,000	0,000	0,000
7				0	0	0,000	0,000	0,000	0,000	0,000	0,000
8				0	0	0,000	0,000	0,000	0,000	0,000	0,000
9				0	0	0,000	0,000	0,000	0,000	0,000	0,000
10				0	0	0,000	0,000	0,000	0,000	0,000	0,000
11				0	0	0,000	0,000	0,000	0,000	0,000	0,000
12				0	0	0,000	0,000	0,000	0,000	0,000	0,000
13				0	0	0,000	0,000	0,000	0,000	0,000	0,000
14				0	0	0,000	0,000	0,000	0,000	0,000	0,000
15				0	0	0,000	0,000	0,000	0,000	0,000	0,000
16				0	0	0,000	0,000	0,000	0,000	0,000	0,000
17				0	0	0,000	0,000	0,000	0,000	0,000	0,000
18				0	0	0,000	0,000	0,000	0,000	0,000	0,000

Legend:

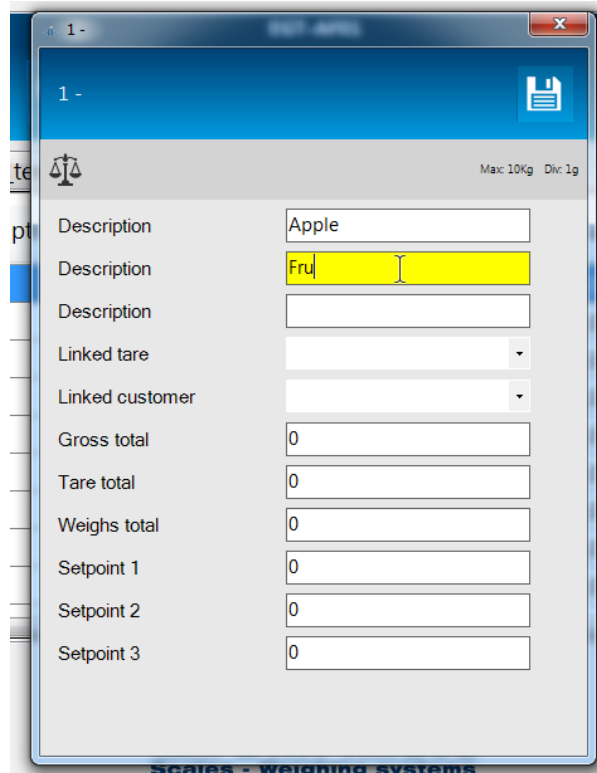
-  Modify the record
-  View the record
-  Send to the indicator the selected records
-  Create a new record
-  Delete selected records
-  Refresh the window
-  Modify archive labels
-  Receive all archives from the indicator
-  Send all records to the indicator
-  Delete the scale on DBManager









To modify a record click on 


Articles data		Tare_d
ID	Descripti	
 	1	
 	2	
 	3	
 	4	

A window will appear and it is possible to edit the descriptions



Then click on  to save it

Articles data		Tare_dtb	Input_texts	Customer_dtb
ID	Description	Description	Description	Li ta
 	1	Apple	Fruit	0
 	2			0
 	3			0

Now the article is compiled, click on  to send it to the indicator

Warranty and user license

Ownership of the software

It is expressly forbidden to copy, modify, resell and/or distribute the software without the explicit consent of Syntweb.

The products developed by Syntweb are of its exclusive ownership. Any reference to other firms and/or registered marks owned by other firms may be cited only for the purpose of plain reference.

Warranty

Syntweb guarantees that the software will work in substantial conformity with the analysis, manuals and the documents accompanying the product, for a period of 90 days from the date of purchase (for standard software) or from the date of testing (for special software): for this whole period the customer will have to test the software in its entirety and communicate any inexactness to Syntweb which commits itself to supply all the necessary assistance in order to solve any inexactness, functioning problem, or "bug" (expressly recognized as that) of the released software, in the shortest time possible.

Once 90 days have passed from the software release any modification or variation to the software must be regularly invoiced as an intervention of modification.

Syntweb does not guarantee the functioning of the software on machines that do not satisfy the specified requirements, or on which are installed products by third parties which interfere directly or indirectly with the functioning of the software.

In case of installation, removal or replacement of any network device that modifies the MAC address of the hardware on which the software has been installed, the software license will be invalidated and the software will stop to work.

If the software is installed on a virtual machine, internet connection is required. If the machine fails to connect to internet for more than 45 days the software will cease to work. Specific warning advice will inform the user of this failure starting from the first day of lack of connection and then for the following 44 days. At the end of this period the software will stop to work until a new connection to internet will be established.

Declaration of responsibility

Syntweb will not be liable in any case for the damages deriving from the use of the software (including, without limitations, the damages caused by loss of profits, interruption of the activities, loss of data, or other economic losses) even though such damages have been communicated.